

# Easy Chart - Subplots

**This section assumes that Tags and Tag History have been configured**

To learn more, go to the [Tag](#) and [Configuring Tag History](#) pages. The examples below use OPC PC Tags from the [Programmable Device Simulator](#) driver, but [Memory](#), [Expression](#), and [Query Tags](#) can be used instead.



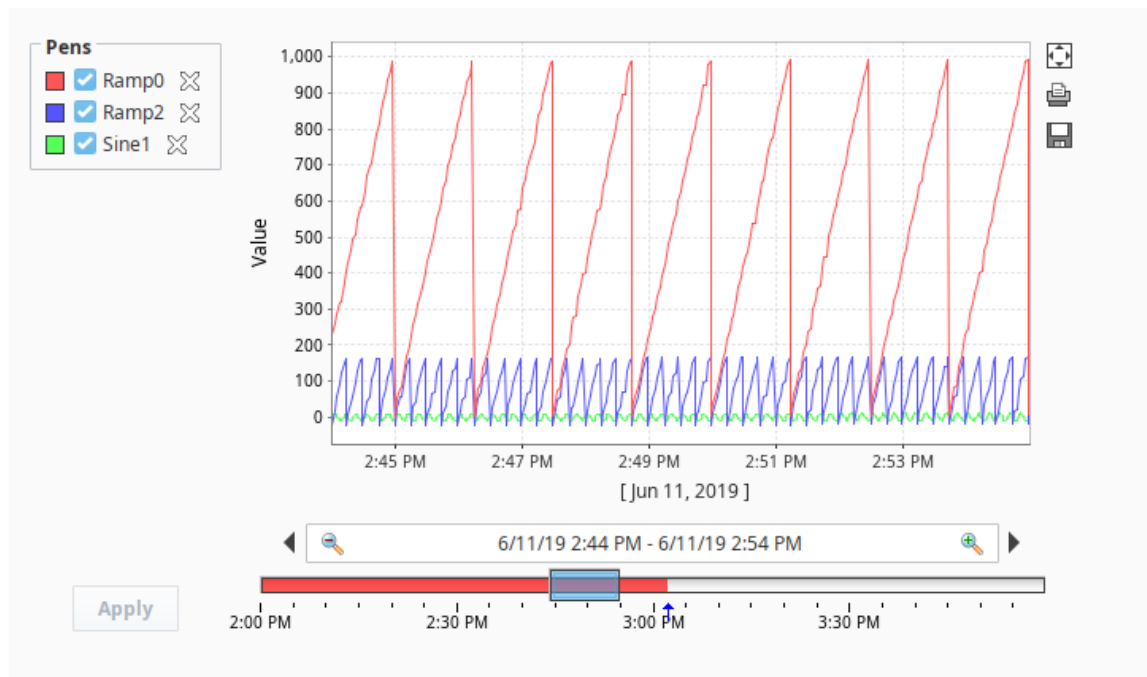
## Easy Chart - Subplots

[Watch the Video](#)

## Subplot Overview

The subplot feature of the Easy Chart component allows you to break up the chart plot area into multiple distinct subplots sharing the 'X' axis, but they each have their own 'Y' axis. It is a good way to display lots of data from different Tags in one Easy Chart.

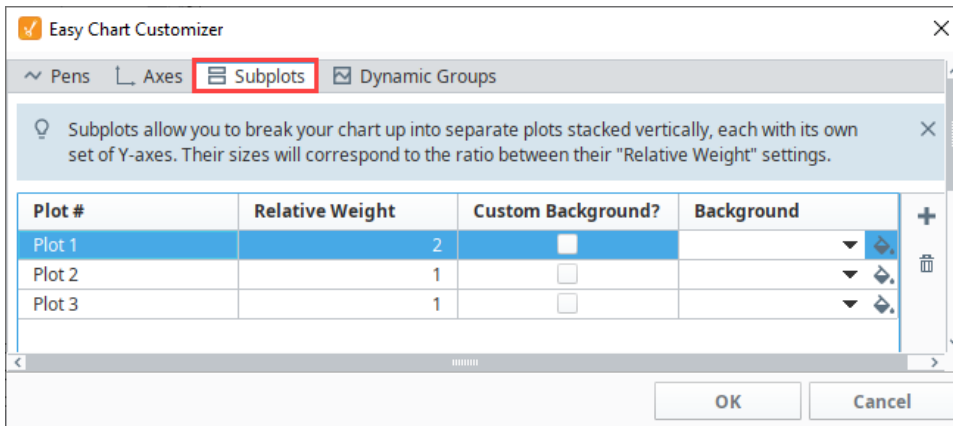
By default, the Easy Chart has one subplot which is the main white area. In this example, there are three Tags inside the chart, yet it's difficult to see the details of the data. It's possible to break up your Tags into multiple subplots which is often useful for discrete data.



## Configuring Easy Chart Subplots

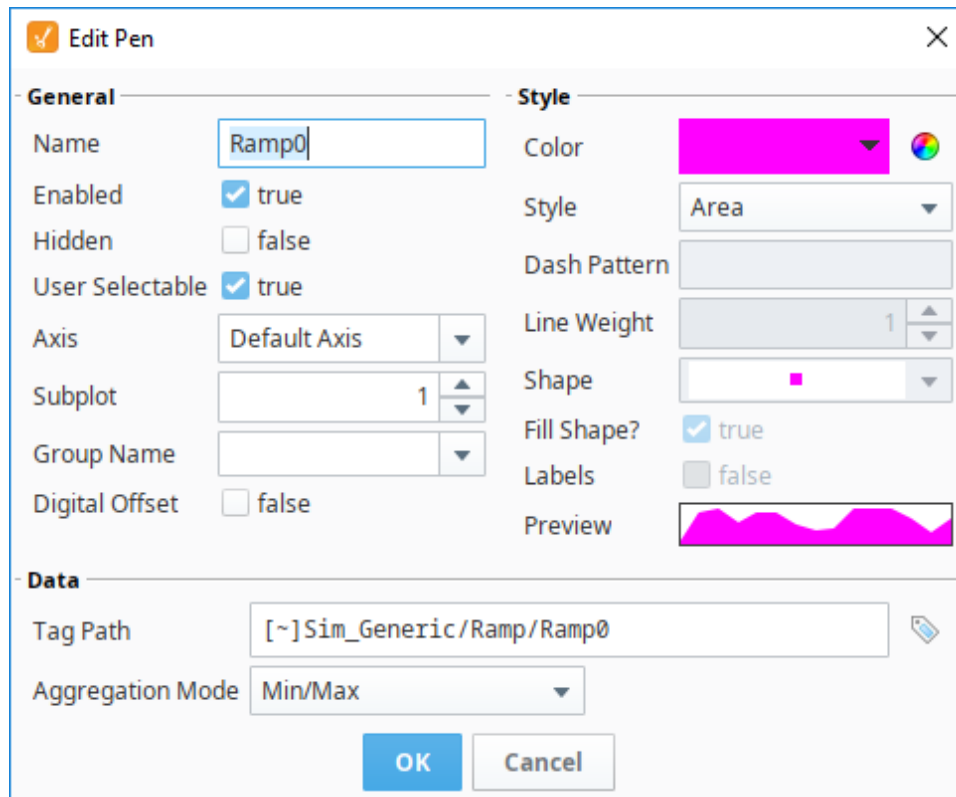
For each Tag in the Easy Chart example above, let's create its own subplot so the data is easier to view and analyze.

1. Drag an Easy Chart component onto your window.
2. Drag three Tags onto the chart. We used Ramp0, Ramp2, and Sine1 from [Programmable Device Simulator](#).
3. Right click on the Easy Chart component and choose **Customizers > Easy Chart Customizer**. The Easy Chart Customizer window opens displaying four tabs.
4. Click on the **Subplots** tab.
5. The Subplots tab lets you add one or more subplots to the Easy Chart. Create two more subplots by clicking the **Add +** icon two more times.
6. The size of each subplot corresponds to the ratio between their "Relative Weight" settings. By default, each subplot is assigned a weight of 1, meaning each subplot will share an equal percentage of space on the chart. In this example, we set **Subplot 1** has a weight of '2', and **Subplots 2 and 3** have a weight of '1'. Subplot 1 is going to be 2 times larger than Subplots 2 and 3.



7. Now that we have subplots, we'll put each of the different pens into a different subplot. Click on the **Pens** tab, select the row for the Ramp0 Pen, and click the **Edit** icon. For this example, we chose the following settings:

- Chose **Subplot 1**.
- Set the color to pink.
- Set the style to **Area**.
- Click **OK**.

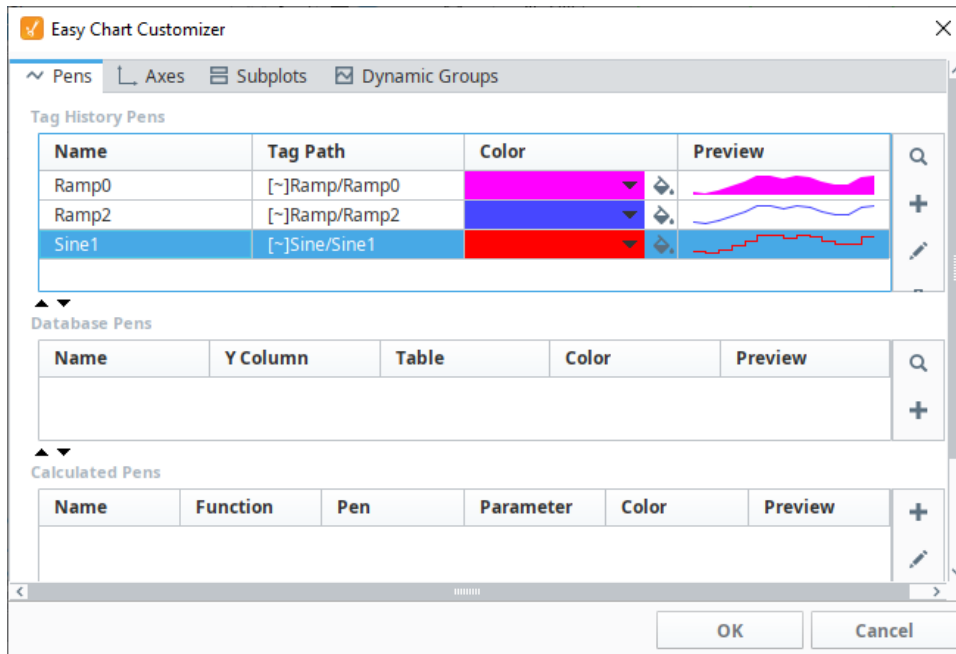


8. For the Ramp2 pen, we selected the following:

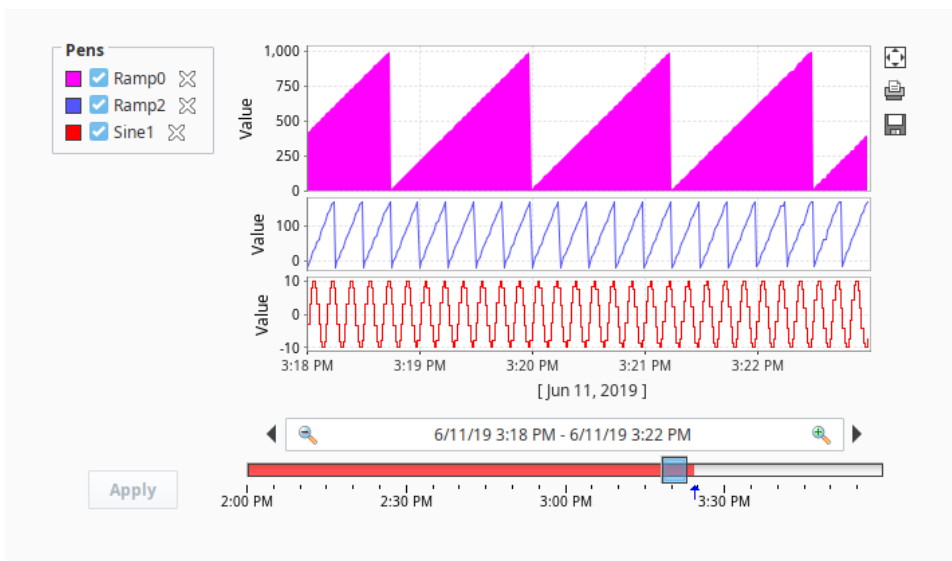
- **Subplot:** 2
- **Color:** Blue
- **Style:** Line w/Gaps

9. For the Sine1 pen, we selected the following:

- **Subplot:** 3
- **Color:** Red
- **Style:** Digital

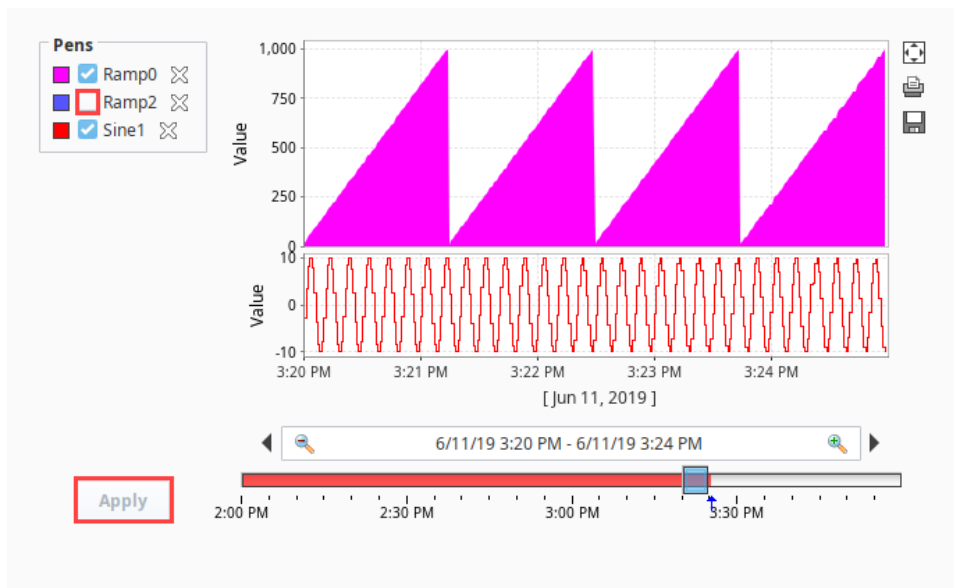


10. Click **OK**.
11. Now, you have three distinct subplots on one Easy Chart. You are not limited to the number of subplots on one Easy Chart.



12. You can be selective about what subplots you want to view. Go to **Preview Mode**, uncheck the Pens you don't want to see, and click **Apply**.

13. Notice how the Ramp2 pen is unchecked and is no longer displayed on the Easy Chart. To add the Ramp2 pen back to the Easy Chart, check the Ramp2 pen, and click **Apply**. The Easy Chart only displays subplots that have active Tags.



Related Topics ...

- [Easy Chart Customizer](#)
- [Easy Chart - Pen Names and Groups](#)
- [Easy Chart - Pen Renderer](#)