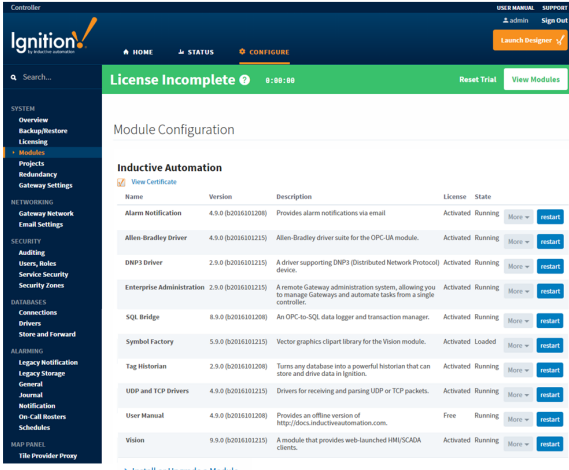


# Installing or Upgrading a Module

All module configuration is done from Gateway in the **Configuration > Modules** section. From here you can add, remove, and restart modules. Modules integrate their settings into the Gateway configuration tree, and therefore do not offer settings in this section.



## To Install or Update a Module

1. On the **Configuration > Modules** page of the Gateway, go to the bottom on the list, find the blue arrow, and click the **Install or Upgrade a Module** link.
2. Click **Choose File**, select a `.mod1` file that you have previously downloaded.

Go to the Inductive Automation [downloads page](#). Search for the module you want and save it to your Downloads folder on your computer.

### Third Party Modules

All third party Ignition modules require the Ignition platform to be installed.

#### To install third party modules:

- Install Ignition: See [Installing and Upgrading Ignition](#)
- Once Ignition is installed, download the module and install it in the Ignition Gateway: See [Installing or Upgrading a Module](#)

SepaSoft, Inc. MES Modules for Ignition		
OEEDT Installer Module	<a href="#">OEEDT-installer-module.mod1</a> (8MB)	Version: 1.9.0.161011600
SPC Installer Module	<a href="#">SPC-installer-module.mod1</a> (10MB)	Version: 1.9.0.161011606
Instrument Interface Module	<a href="#">Instrument-interface-module.mod1</a> (1MB)	Version: 1.9.0.161011601
Recipe Installer	<a href="#">Recipe-installer-module.mod1</a> (8MB)	Version: 1.9.0.161011609
Production Simulator Installer	<a href="#">Production-Simulator-module.mod1</a> (58KB)	Version: 1.9.0.161011559
Trace Installer	<a href="#">Trace-installer-module.mod1</a> (7MB)	Version: 1.9.0.161011555
Web Service Module	<a href="#">Web-Service-module.mod1</a> (2MB)	Version: 1.9.0.161011611
Barcode Scanner Module	<a href="#">Barcode-Scanner-module.mod1</a> (81KB)	Version: 1.9.0.161011610

Note: If you are using Internet Explorer, IE changes the file extension to a '.zip' file. Rename '.zip' to '.mod1' (I.e., Production Simulator-module.mod1).

Go back to the **Install or Upgrade Module** screen and browse your Downloads folder for your module, select it, and click **Open**. Ignition will copy the path to the module to the Browse field and all that's left for you to do is click **Install**.

3. Click **Install**.  
When the page reloads you can now see the module you installed in the list of modules.

## To Uninstall a Module

1. On the **Configuration > Modules** page of the Gateway, go to the module you want to uninstall.
2. Under the **More** button, click the **uninstall** link on the far-right next to the module entry in the table.  
Another page opens asking you to confirm.
3. Click **Confirm**.  
The module is no longer installed and is removed from the list.

Modules are hot-swappable, this means these actions can be performed while the system is running. Furthermore, the isolated nature of modules ensures that performing one of these actions only affects that particular module, and any modules which depend on it. For example, uninstalling the SQL Bridge module will not affect any running Vision module clients.

## Restarting a Module

Modules can be restarted by clicking the **restart** button next to their entries on the **Configuration > Modules** page. Because of the isolated nature of modules, the other modules are not affected by the **restart** (unless they depend on that particular module).

## Module Status

The installed module list on the **Configuration > Modules** page also provides some basic information about the **State** of the module. The **Version**, **License**, and **State** columns are all displayed in the list. Module licensing is performed centrally in **System > Licensing**, so the values here are only for information purposes.

The module **State** can be either **Running** or **Loaded**. Running means the module programs are actively performing tasks, for example, the Alarm Notification modules shows as Running because it is continually checking for condition changes that need to set the alarm on or off. Loaded means the module program or resources are available but nothing is running, for example, the Symbol Factory module makes all the symbol images available for your use.

### Related Topics ...

- [License Activation](#)