

Designer Launcher

The Designer Launcher makes it extremely easy for you to hit the ground running on your projects. The Designer Launcher locates all Gateways that are available on a local network. Each Designer that is added to the My Designers list represents a shortcut to a particular Gateway, and once that Designer is opened you can access or create new projects on that Gateway. The same Designer can access all the projects that are available on that Gateway, and you don't need to add the Designer multiple times for different Gateways!

Create a Designer Launcher shortcut on your desktop and you can open your Designer, and create or edit a project in a flash!

Login credentials/permissions

If the Designer Launcher locates and adds a Gateway to your list of designers, you must have the right credentials/privileges to login to that particular Designer.

Download and Install

Best Practice

It's good practice to download and install the Designer Launcher every time you install a new release of Ignition. The Designer Launcher is a separate application and is not part of an Ignition release, so it's important not to have an outdated Designer Launcher shortcut residing on your desktop. Each time you install a new version of Ignition, download and install the Designer Launcher, and let the install process create a new desktop shortcut for you automatically.

On this page

...

- Download and Install Designer Launcher
- Designer Launcher Settings
 - Action Buttons
- Adding Additional Designers
 - Designer Application Settings Reference
- Self-Signed Certificates
- Troubleshooting



The Designer Launcher

[Watch the Video](#)

This feature is new in Ignition version **8.0.10**
[Click here](#) to check out the other new features

The Designer Launcher can now be installed as an "all user" application on a Windows operating system providing launcher access to all users on the same machine from a single installation. The first time you install the Designer Launcher, you will be prompted to select your install mode: "Install for me only" or to "Install for all users." If the Designer Launcher was already installed, subsequent install attempts are treated as an upgrade and you will not be prompted to select the install mode. This new option will only appear on new launcher installations, or after uninstalling a prior version of the installer.

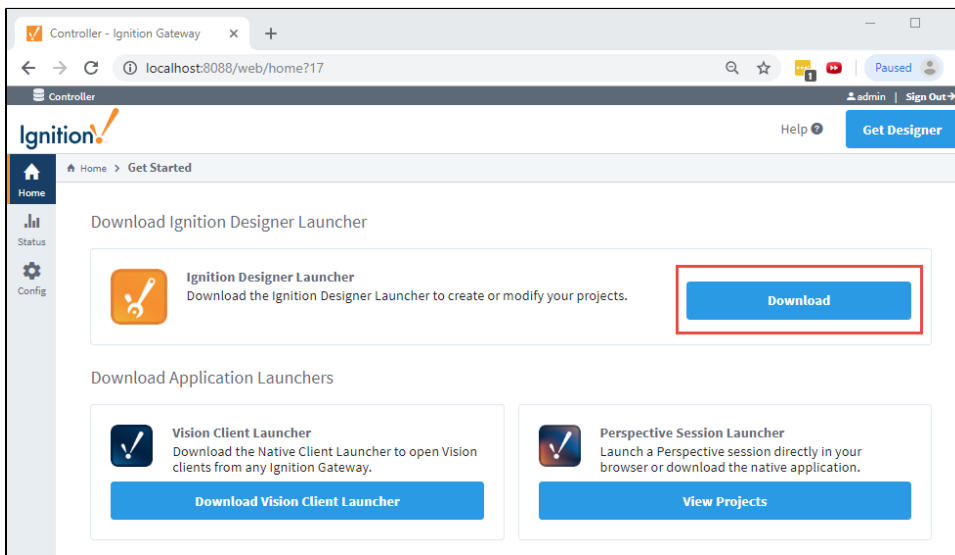
Designer Launcher Destination Folder

When installing for "all users," the installer will be placed in the following folder: "%Ignition Installation Directory%\Program Files\Inductive Automation."

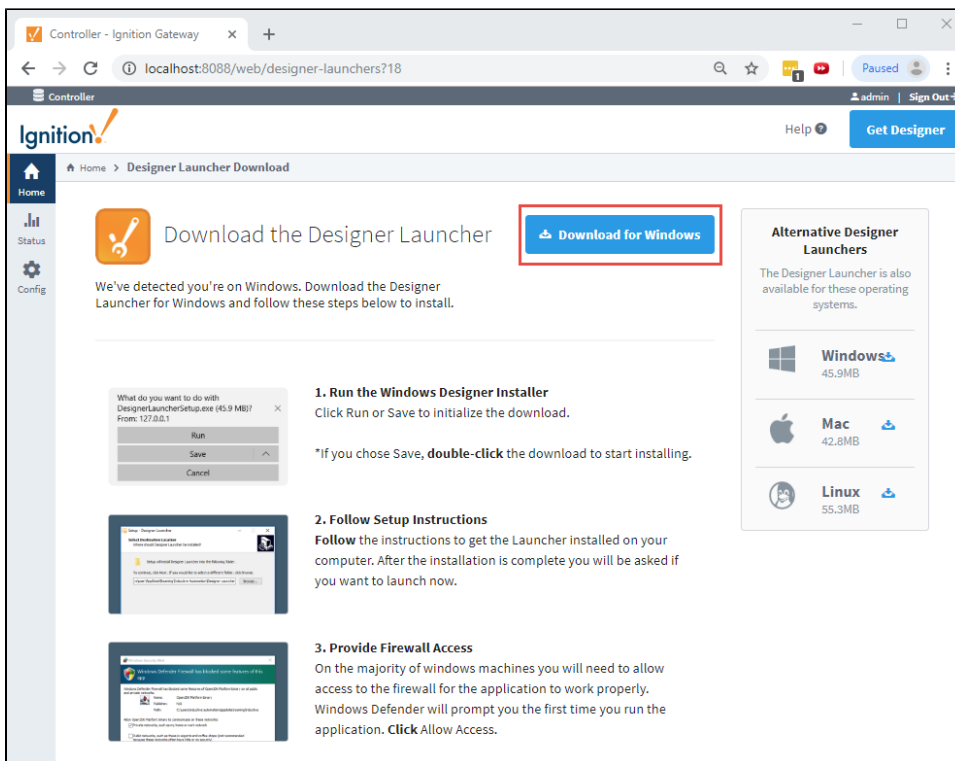
When installing for "me only," the installer will be found under the "\AppData\Roaming\Inductive Automation" folder.

The Designer Launcher for Windows, Linux, and Mac OS are available on the **Home** tab of the Gateway Webpage. Use the following steps to do an install of the Designer Launcher.

1. From the Gateway Webpage, click the **Download** button for the Ignition Designer Launcher.

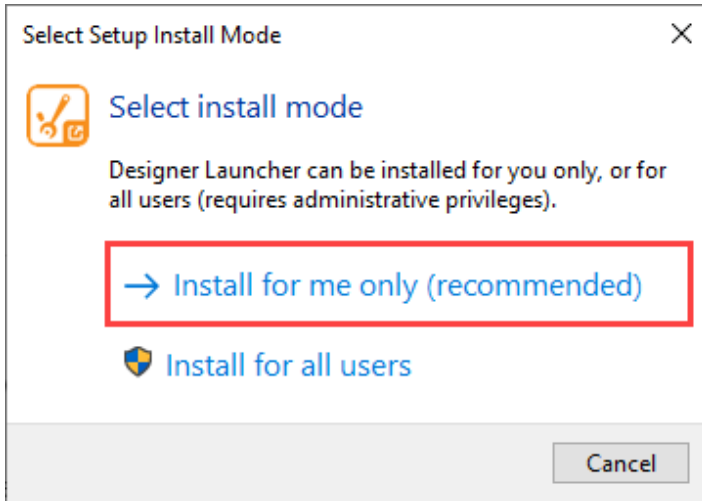


2. Ignition knows what platform you're running, and will display it on the Download button.

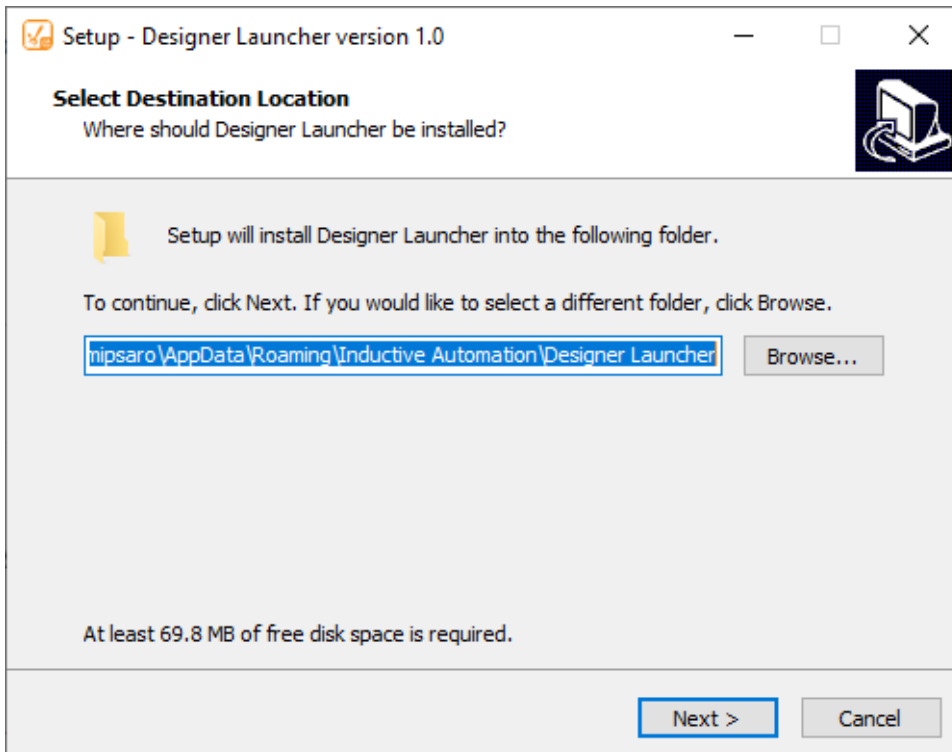


3. Run the downloaded file (**DesignerLauncherSetup.exe**) found on the lower-left of the window, or go to your **Downloads** folder and double-click the file to run it.

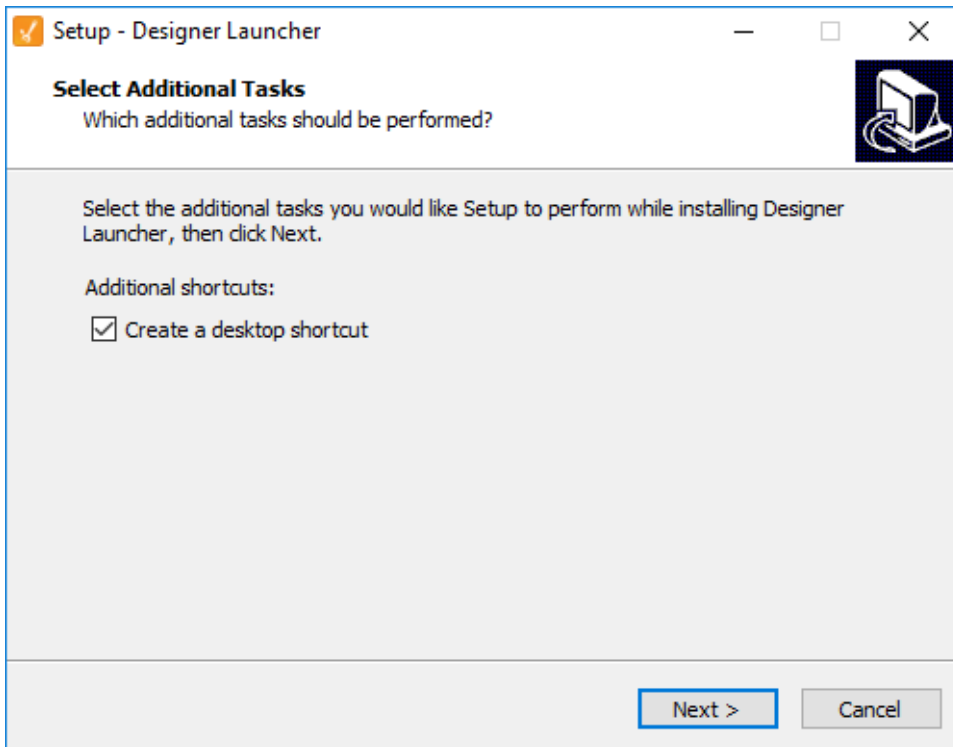
4. If this is the first time installing the Designer Launcher, you will be prompted to select an install mode. Select either "**Install for me only**," or "**Install for all users**."



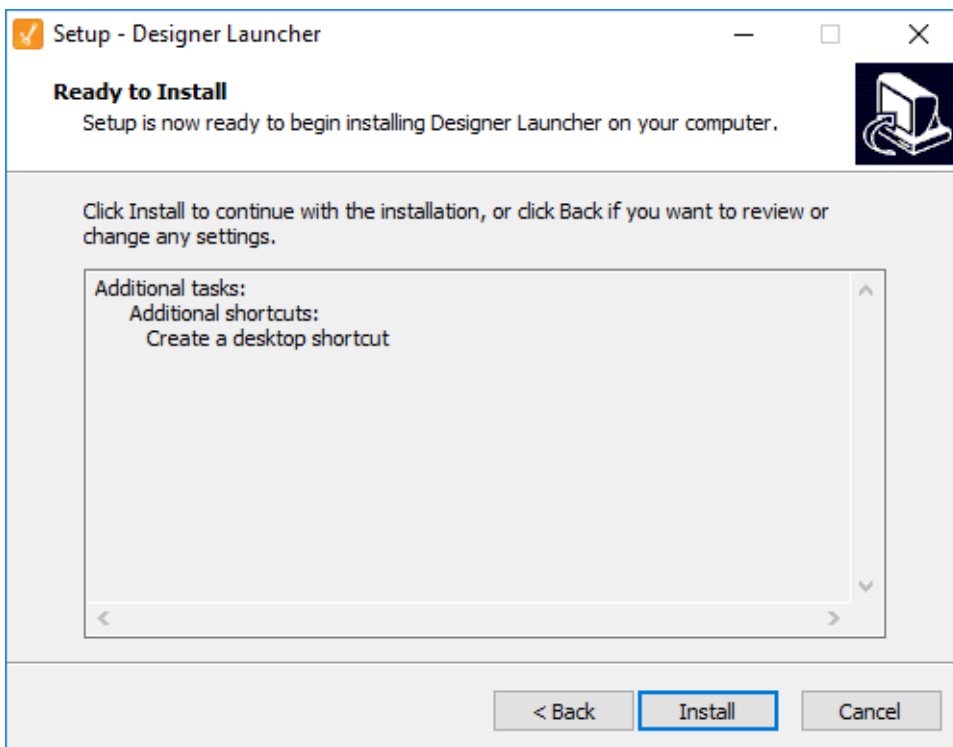
5. The Install Wizard will select a default destination location folder for the Designer Launcher application files. If you are "installing for me only", the destination folder will be different from the "all users" destination folder.



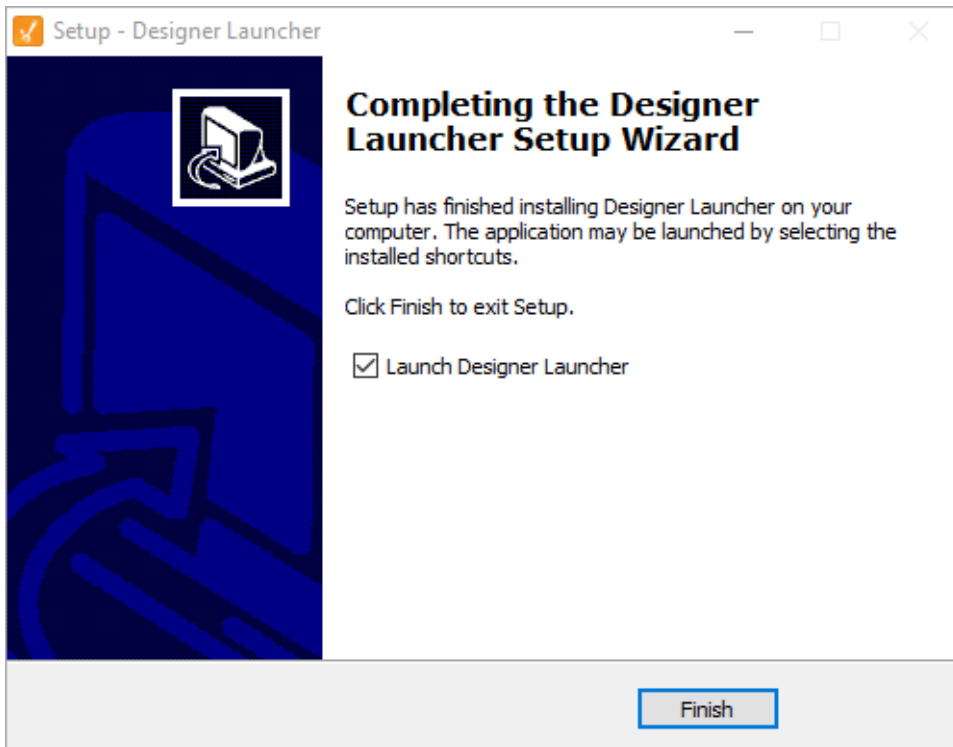
6. The Select Additional Tasks window will open. You'll notice that a desktop shortcut is checked and will be created so you don't have to run the Designer Launcher each time you want to open the Designer. Click **Next**.



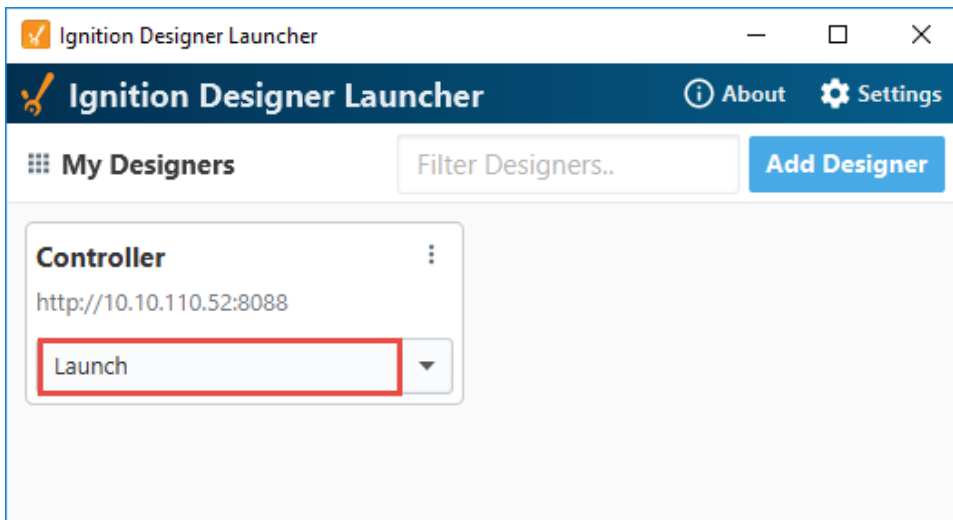
7. Now, you're Ready to Install the Designer Launcher on your computer. Click **Install** to continue.



8. Once the Designer Launcher is installed, click **Finish**.



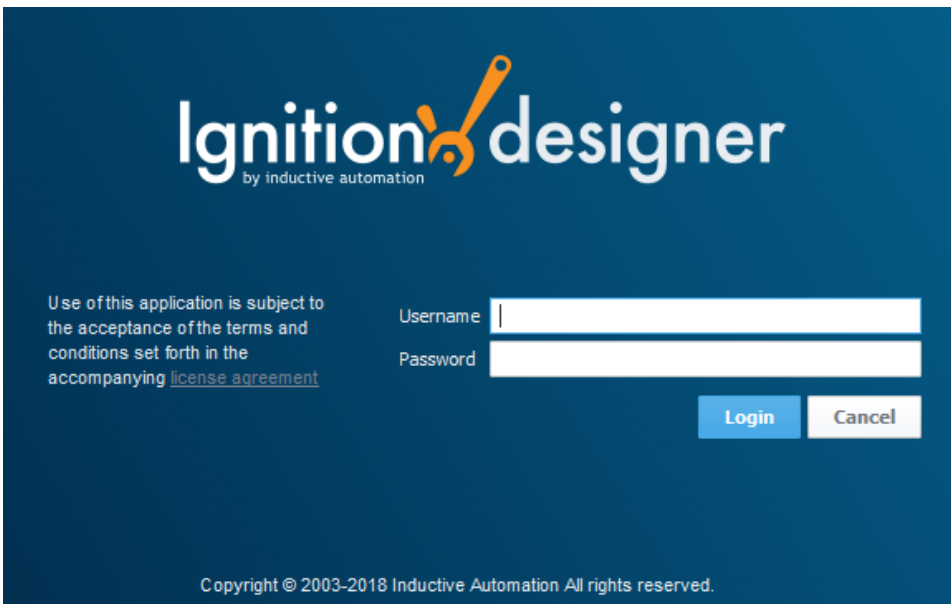
9. The Ignition Designer Launcher window will open. Here you can select any Designers you have permission to launch. If you are running this for the first time, by default, you will only see one Designer. Click **Launch**.



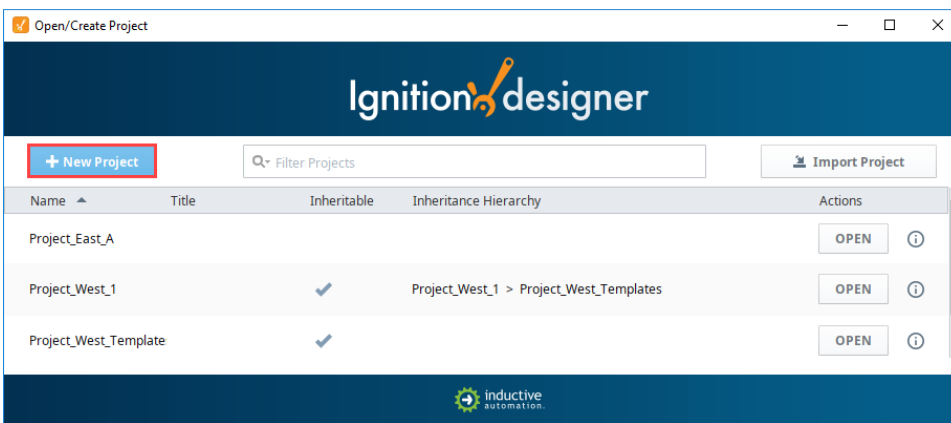
10. The Designer starts up and the login window is displayed. Enter the credentials for the administrator or user with full privileges for the Designer, and click **Login**. It should be the same as the login for the Gateway **Config** section.



Login credentials are set in the **Config** section of the Gateway Webpage, under Security > Users, Roles.



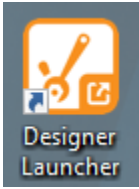
11. The **Open/Create Project** window is displayed giving you two options: create a new project or open an existing one. Enter a project name and then click the **Create New Project** button.



Configuring the Designer Launcher

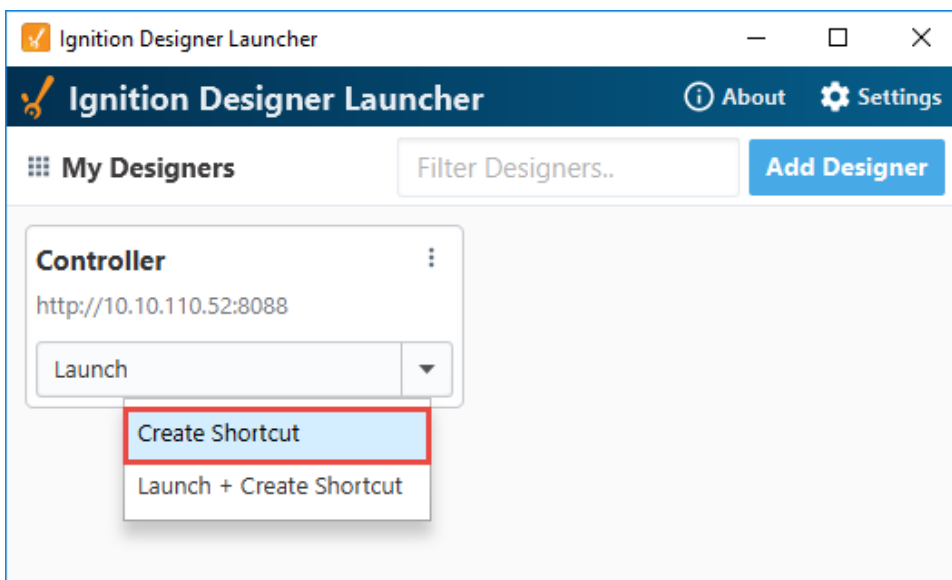
Configuring the Designer Launcher is fairly simple. The Designer Launcher finds the Gateways, you add the Gateways to My Designers, and the only thing left to do is create your Designer shortcuts. You can create a shortcut for each Designer, or use the Designer Launcher to display all your Designers. Creating shortcuts makes them readily accessible for opening a Designer quickly. Let's open the Designer Launcher to create a few shortcuts.

1. If you followed the steps in the previous section for installing the Designer Launcher, then you already have the Designer Launcher shortcut on your desktop which looks like the image below.

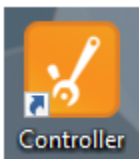


If you don't, then go back to the Gateway Webpage and download and install the Designer Launcher again. Follow the wizard instructions as shown in the previous section. Be sure to check the **Create a desktop shortcut** on the Select Additional Tasks window.

2. Find the Designer Launcher shortcut on your desktop and click it to open the Designer Launcher window. A list of Designers will be displayed.
3. Now let's create a shortcut on your desktop for your Designer. You have the option to **Create Shortcut**, or **Launch + Create a Shortcut** for that Designer. Click the dropdown box, select **Create Shortcut**, and a shortcut will be placed on your desktop.



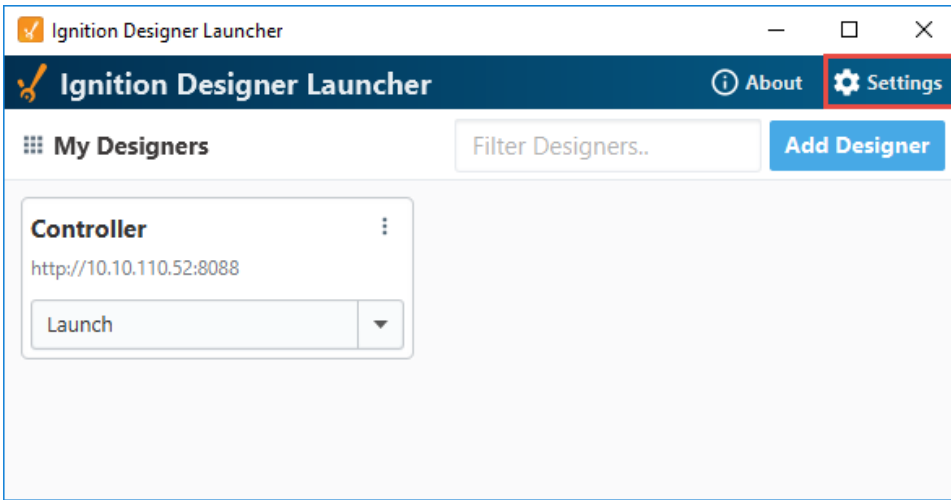
4. Go to your desktop and click the shortcut to open your Designer. You'll notice that name of your Designer is also the name of the shortcut (i.e., **Controller**).



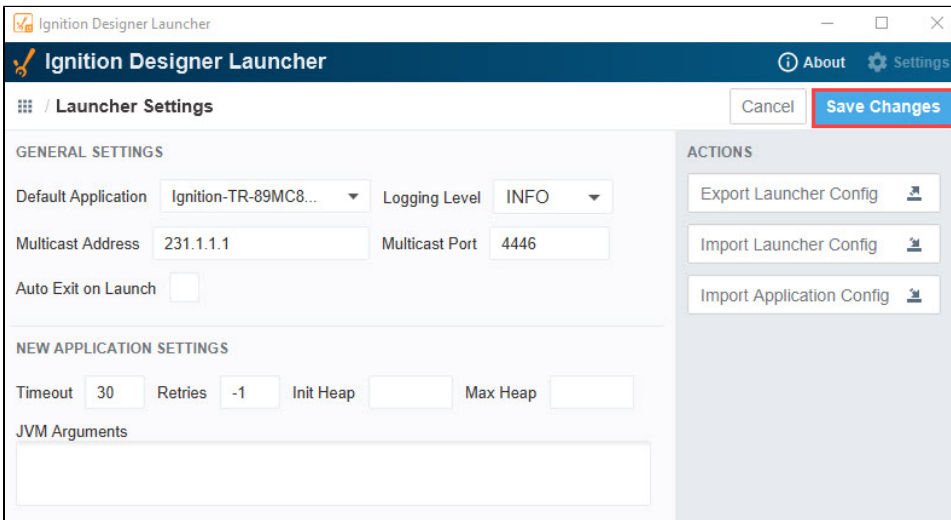
Designer Launcher Settings

You have the option of customizing the Designer Launcher Settings.

1. To access Designer Launcher Settings, click **Settings** on the top right of any Designer Launcher window.



- When the Designer Launcher Settings window opens, you can choose to use the default settings or customize each Designer. When finished, click **Save Changes**.



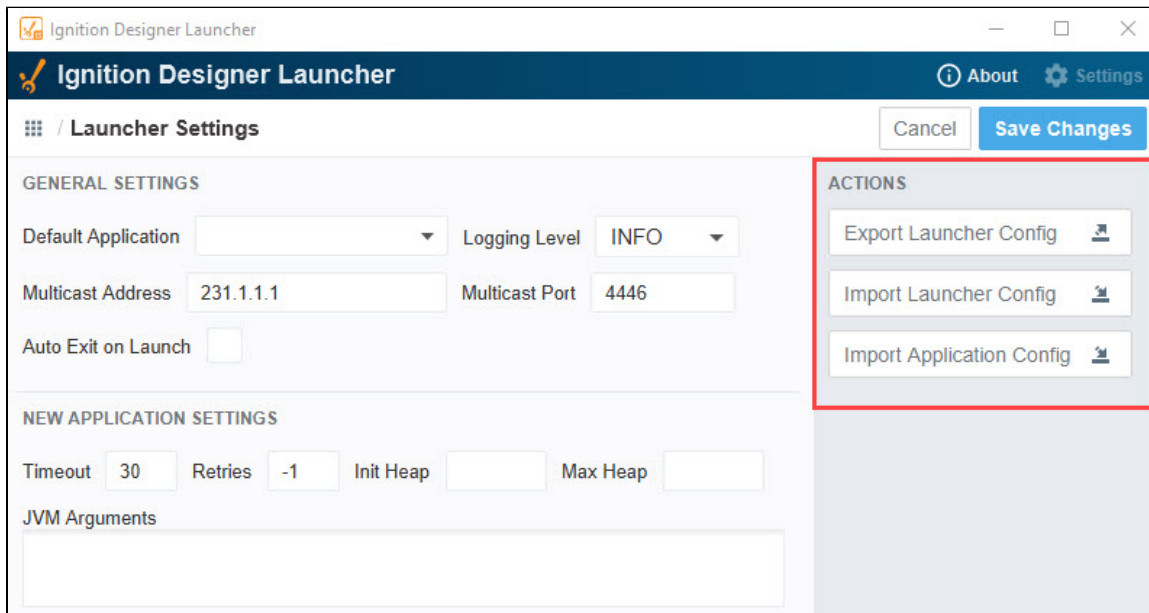
Launcher Settings - Configurations for the Launcher		
Property Setting	Description	JSON Name
Default Application	When set, the Launcher will attempt to automatically launch the specified Application when running. If left blank/null, an Application will not automatically start	default.application
Logging Level	Level of logging that will be used for the launcher: INFO, TRACE, DEBUG, WARN, and ERROR.	logger.level
Multicast Address	The address that will be used to listen for multicast broadcasts from Gateways.	multicast.address
Multicast Ports	The port that will be used to listen for multicast broadcasts from Gateways.	multicast.receive.port
Auto Exit on Launch	Automatically close the launcher window when a client is started.	autoexit

Application Defaults - Default Configurations for New Applications

Property Setting	Description	JSON Name
Timeout	Maximum number of seconds allowed for any Gateway communication. Any communication that exceeds this amount will cause the client launcher to abort the communication and try again if configured.	timeout
Retries	The number of times a Client will attempt to contact a gateway again if an error occurred during communication. Available values are: <ul style="list-style-type: none"> -1 : Retry indefinitely, or until the launcher is manually closed. 0 : Zero retries, or abort after the first failure. 1 (or more): Determines the number of retries: i.e., a value of "5" means five retries. 	retries
Initial Heap	Amount of memory to be allocated at startup.	init.heap
Max Heap	Maximum amount of memory allocation for heap size.	max.heap
JVM	Arguments to append to client startup. These should start with a '-D' and be separated by semi-colons.	jvm.arguments
Client Tag Overrides	Client Tags and their values that are set when the client launches.	client.tag.overrides

Action Buttons

There are three different Action buttons in settings in the Designer Launcher.

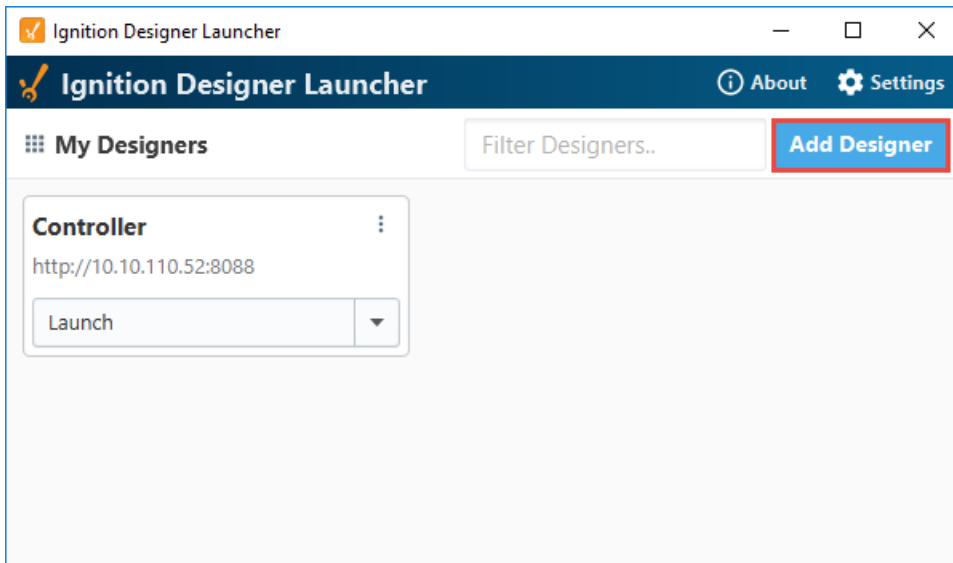


Action Button	Description
Export Launcher Config	Exports all Designer Launcher settings to a json file.
Import Launcher Config	Imports Designer Launcher settings from a json file.
Import Application Config	Imports a Designer configuration from an export json file.

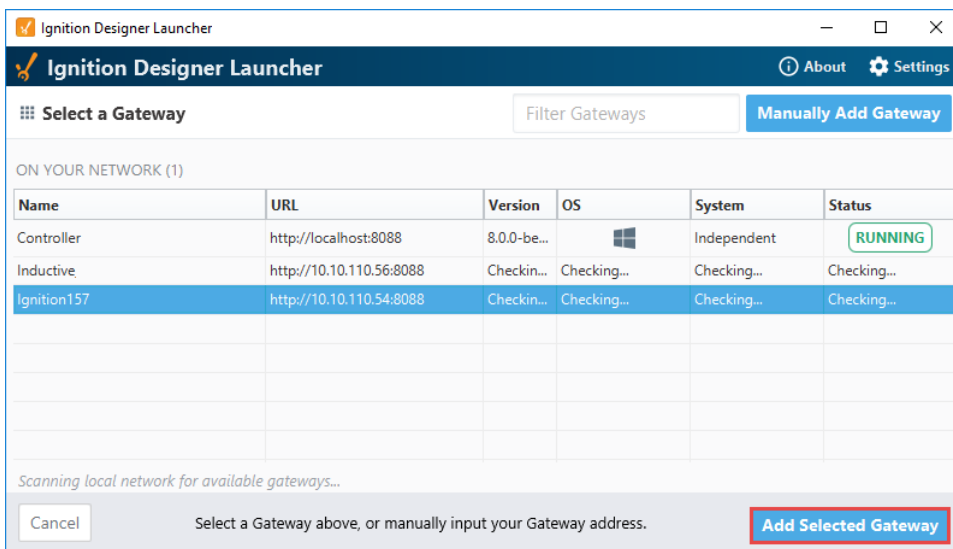
Adding Additional Designers

Adding additional Designers is simple since the Designer Launcher does all the work for you.

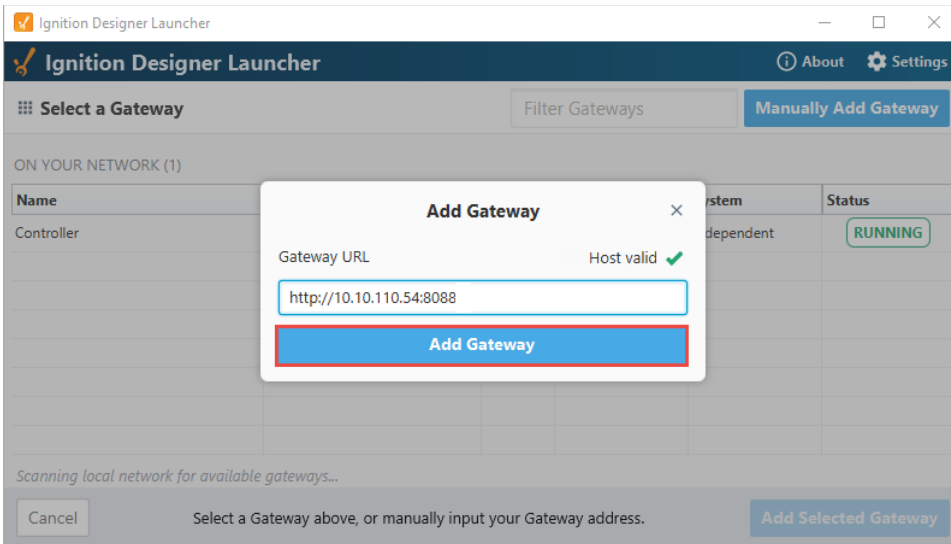
1. With the Designer Launcher open, click the **Add Designer** button.



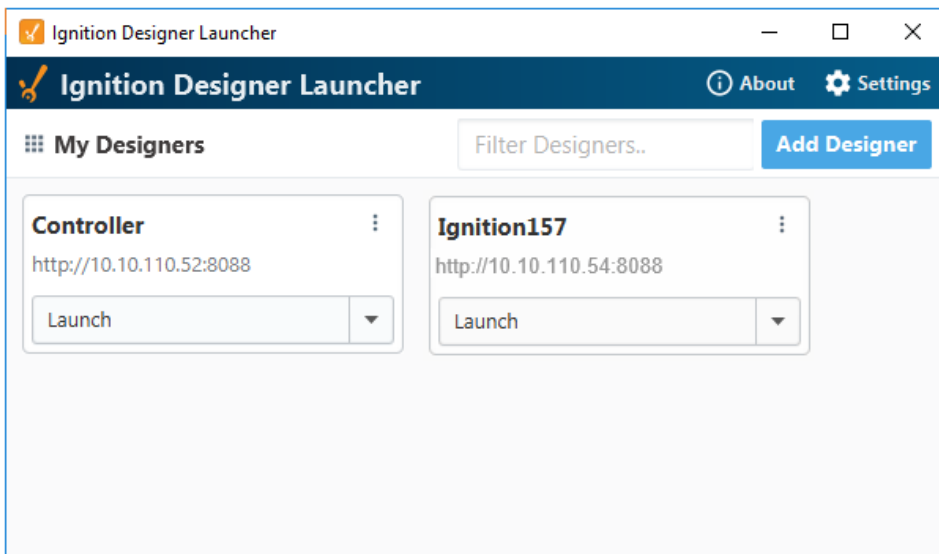
2. The Designer Launcher will browse and list all the available Gateways on your local network as well as someone else's on the same network. Select from any of the available networks and press the **Add Selected Gateway** button. You can only select and add one Gateway at a time.



3. If you don't see the Gateway you're looking for, but know the IP address, you can enter it manually. Click the **Manually Add Gateway** button in the upper right corner and enter the **Gateway URL**. It will inform you if you have a valid host name. If so, click **Add Gateway**.



4. Once it's added, it will appear your **My Designers** list.



Designer Application Settings Reference

Setting Name	Description
Application Name	The name of the Designer application, as it appears in the launcher.
Timeout	The maximum number of seconds to allow for any gateway communication. Any communication that exceeds this amount will cause the Vision client launcher to abort the communication and try again if configured.
Retries	How many times to attempt to contact a gateway again if an error occurred during communication. Available values are: <ul style="list-style-type: none"> -1 : Retry indefinitely, or until the launcher is manually closed. 0 : Zero retries, or abort after the first failure. 1 (or more): Determines the number of retries: i.e., a value of "5" means five retries. If the number of retries is exceeded, then the launcher will attempt to launch the Fallback Application.

Initial Heap	The initial heap size (memory) for the client.
Maximum Heap	The maximum heap size (memory) for the client.
JVM Arguments	Additional JVM arguments to add to that specific application if desired. The defaults are created from the global jvm-args that exist at the time of the creation of the application. These can then be modified and the modifications will persist and never be updated again from the global setting.

Self-Signed Certificates

When using a self-signed [SSL](#) certificate, the certificates for the gateway must be locally accessible to the client launcher in the following directory:

```
{user folder}\.ignition\clientlauncher-data\certificates
```

When a certificate is placed in the directory above, the launcher will attempt to automatically add the certificate(s) to the local keystore upon application launch.

Troubleshooting

If the Designer Launcher fails to launch a designer for some reason, the log file can be found at:

```
{user folder}\.ignition\clientlauncher-data\designer.log
```

This log should contain any errors that occurred.

Related Topics ...

- [Designer](#)
- [Quick Start Guide](#)