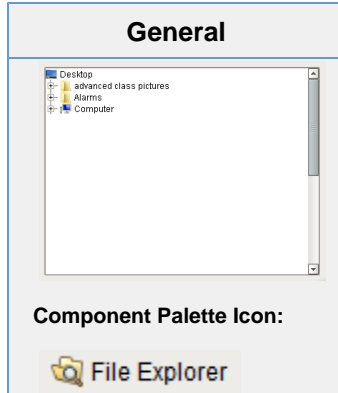


File Explorer





INDUCTIVE UNIVERSITY

File Explorer

[Watch the Video](#)

Description

The File Explorer component displays a filesystem tree to the user. It can be rooted at any folder, even network folders. It can also filter the types of files that are displayed by their file extension (i.e., ".pdf"). The path to the file that the user selects in the tree is exposed in the bindable property Selected Path.

The File Explorer component is typically used in conjunction with the PDF Viewer component in order to create a PDF viewing window. This is very useful for viewing manuals, documents, or reports from within your project. To use this component to drive a PDF Viewer component, refer to the section on [File Explorer and PDF Viewer](#).

Properties

Name	Description	Property Type	Scripting	Category
Background Color	The background color of the component.	Color	.background	Appearance
Border	The border surrounding this component. NOTE that the border is unaffected by rotation.	Border	.border	Common
Cursor	The mouse cursor to use when hovering over this component.	int	.cursorCode	Common
Enabled	If disabled, the component can't be used.	boolean	.componentEnabled	Common
File extension filter	Semi-colon separated list of extensions to filter out files, such as pdf or txt. Example "pdf;html;txt" shows pdf, html, and text documents.	String	.fileFilter	Behavior
Font	Font of text on this component.	Font	.font	Appearance
Foreground Color	The foreground color of the component.	Color	.foreground	Appearance
Mouseover Text	The text that is displayed in the tooltip which pops up on mouseover of this component.	String	.toolTipText	Common
Name	The name of this component.	String	.name	Common
Root Directory	A directory to act as the root of the file explorer.	String	.rootDir	Behavior
Selected Path	The selected file or folder's path.	String	.selectedPath	Data
Visible	If disabled, the component will be hidden.	boolean	.visible	Common

Scripting

Scripting Functions

This component does not have scripting functions associated with it.

Extension Functions

This component does not have extension functions associated with it.

Event Handlers

▼ mouse

▼ mouseClicked

This event signifies a mouse click on the source component. A mouse click is the combination of a mouse press and a mouse release, both of which must have occurred over the source component. Note that this event fires after the pressed and released events have fired.

.source	The component that fired this event.
.button	The code for the button that caused this event to fire.
.clickCount	The number of mouse clicks associated with this event.
.x	The x-coordinate (with respect to the source component) of this mouse event.
.y	The y-coordinate (with respect to the source component) of this mouse event.
.popupTrigger	Returns True (1) if this mouse event is a popup trigger. What constitutes a popup trigger is operating system dependent, which is why this abstraction exists.
.altDown	True (1) if the Alt key was held down during this event, false (0) otherwise.
.controlDown	True (1) if the Control key was held down during this event, false (0) otherwise.
.shiftDown	True (1) if the Shift key was held down during this event, false (0) otherwise.

▼ mouseEntered

This event fires when the mouse enters the space over the source component.

.source	The component that fired this event.
.button	The code for the button that caused this event to fire.
.clickCount	The number of mouse clicks associated with this event.
.x	The x-coordinate (with respect to the source component) of this mouse event.
.y	The y-coordinate (with respect to the source component) of this mouse event.
.popupTrigger	Returns True (1) if this mouse event is a popup trigger. What constitutes a popup trigger is operating system dependent, which is why this abstraction exists.
.altDown	True (1) if the Alt key was held down during this event, false (0) otherwise.
.controlDown	True (1) if the Control key was held down during this event, false (0) otherwise.
.shiftDown	True (1) if the Shift key was held down during this event, false (0) otherwise.

▼ mouseExited

This event fires when the mouse leaves the space over the source component.

.source	The component that fired this event.
.button	The code for the button that caused this event to fire.
.clickCount	The number of mouse clicks associated with this event.
.x	The x-coordinate (with respect to the source component) of this mouse event.
.y	The y-coordinate (with respect to the source component) of this mouse event.
.popupTrigger	Returns True (1) if this mouse event is a popup trigger. What constitutes a popup trigger is operating system dependent, which is why this abstraction exists.
.altDown	True (1) if the Alt key was held down during this event, false (0) otherwise.
.controlDown	True (1) if the Control key was held down during this event, false (0) otherwise.
.shiftDown	True (1) if the Shift key was held down during this event, false (0) otherwise.

▼ mousePressed

This event fires when a mouse button is pressed down on the source component.

.source	The component that fired this event.
.button	The code for the button that caused this event to fire.
.clickCount	The number of mouse clicks associated with this event.
.x	The x-coordinate (with respect to the source component) of this mouse event.
.y	The y-coordinate (with respect to the source component) of this mouse event.
.popupTrigger	Returns True (1) if this mouse event is a popup trigger. What constitutes a popup trigger is operating system dependent, which is why this abstraction exists.
.altDown	True (1) if the Alt key was held down during this event, false (0) otherwise.
.controlDown	True (1) if the Control key was held down during this event, false (0) otherwise.
.shiftDown	True (1) if the Shift key was held down during this event, false (0) otherwise.

▼ mouseReleased

This event fires when a mouse button is released, if that mouse button's press happened over this component.

.source	The component that fired this event.
.button	The code for the button that caused this event to fire.
.clickCount	The number of mouse clicks associated with this event.
.x	The x-coordinate (with respect to the source component) of this mouse event.
.y	The y-coordinate (with respect to the source component) of this mouse event.
.popupTrigger	Returns True (1) if this mouse event is a popup trigger. What constitutes a popup trigger is operating system dependent, which is why this abstraction exists.
.altDown	True (1) if the Alt key was held down during this event, false (0) otherwise.
.controlDown	True (1) if the Control key was held down during this event, false (0) otherwise.
.shiftDown	True (1) if the Shift key was held down during this event, false (0) otherwise.

▼ mouseMotion

▼ mouseDragged

Fires when the mouse moves over a component after a button has been pushed.

.source	The component that fired this event.
.button	The code for the button that caused this event to fire.
.clickCount	The number of mouse clicks associated with this event.
.x	The x-coordinate (with respect to the source component) of this mouse event.
.y	The y-coordinate (with respect to the source component) of this mouse event.
.popupTrigger	Returns True (1) if this mouse event is a popup trigger. What constitutes a popup trigger is operating system dependent, which is why this abstraction exists.
.altDown	True (1) if the Alt key was held down during this event, false (0) otherwise.
.controlDown	True (1) if the Control key was held down during this event, false (0) otherwise.
.shiftDown	True (1) if the Shift key was held down during this event, false (0) otherwise.

▼ mouseMoved

Fires when the mouse moves over a component, but no buttons are pushed.

.source	The component that fired this event.
.button	The code for the button that caused this event to fire.
.clickCount	The number of mouse clicks associated with this event.
.x	The x-coordinate (with respect to the source component) of this mouse event.
.y	The y-coordinate (with respect to the source component) of this mouse event.
.popupTrigger	Returns True (1) if this mouse event is a popup trigger. What constitutes a popup trigger is operating system dependent, which is why this abstraction exists.
.altDown	True (1) if the Alt key was held down during this event, false (0) otherwise.
.controlDown	True (1) if the Control key was held down during this event, false (0) otherwise.
.shiftDown	True (1) if the Shift key was held down during this event, false (0) otherwise.

▼ propertyChange

▼ propertyChange

Fires whenever a bindable property of the source component changes. This works for standard and custom (dynamic) properties.

.source	The component that fired this event.
.newValue	The new value that this property changed to.
.oldValue	The value that this property was before it changed. Note that not all components include an accurate oldValue in their events.
.propertyName	The name of the property that changed. NOTE: remember to always filter out these events for the property that you are looking for! Components often have many properties that change.

Customizers

The File Explorer component does not have a customizer.

Examples

Refer to the example on the [Vision Reporting Components](#) page.