

Browsing and Creating OPC Tags

OPC Tags

There are two ways to create OPC tags.

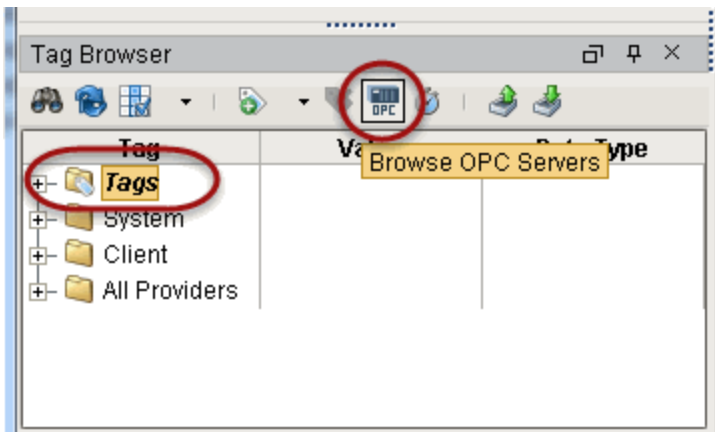
- **From OPC Browser**
Using the OPC Browser to browse and find the tag and then drag it to the Tag Browser to create the tag. This method is the easiest and most common way to create tags.
- **From Tag Editor**
When the tag is not available for browsing from the OPC Browser, you create the tag manually, from the Tag Editor window.

Both of these methods require that you first have a [device connection](#) made.

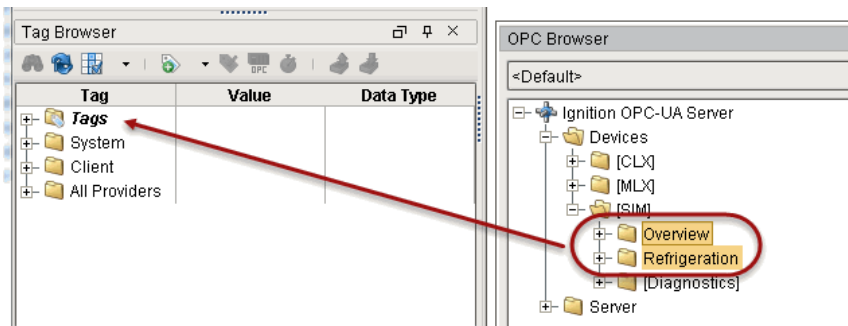
Browsing for Tags


The easiest and most common way to create Tags in Ignition is by dragging the tags from the OPC Browser into the Tag Browser window in the Designer.

1. In the **Tag Browser**, select the **Tags** folder and click the **Browse OPC Servers** icon. The OPC Browser is displayed and you can browse all of your OPC connections. By default, you've got a connection to the internal **Ignition OPC-UA Server**, which has any devices that may be connected. Browse the devices and find some tags that you're interested in.



2. From the **OPC Browser**, highlight the tags (for example, as in the picture below, both folders inside the **SIM** folder) and drag them to the **Tags** folder in the **Tag Browser**. You can drag individual tags or folders. When you drag folders, Ignition keeps the same hierarchy as the PLC. As soon as you drag the tags into Tag Browser, you can see their values being updated in the Tag Browser.





**INDUCTIVE
UNIVERSITY**

**Browsing for OPC
Tags**

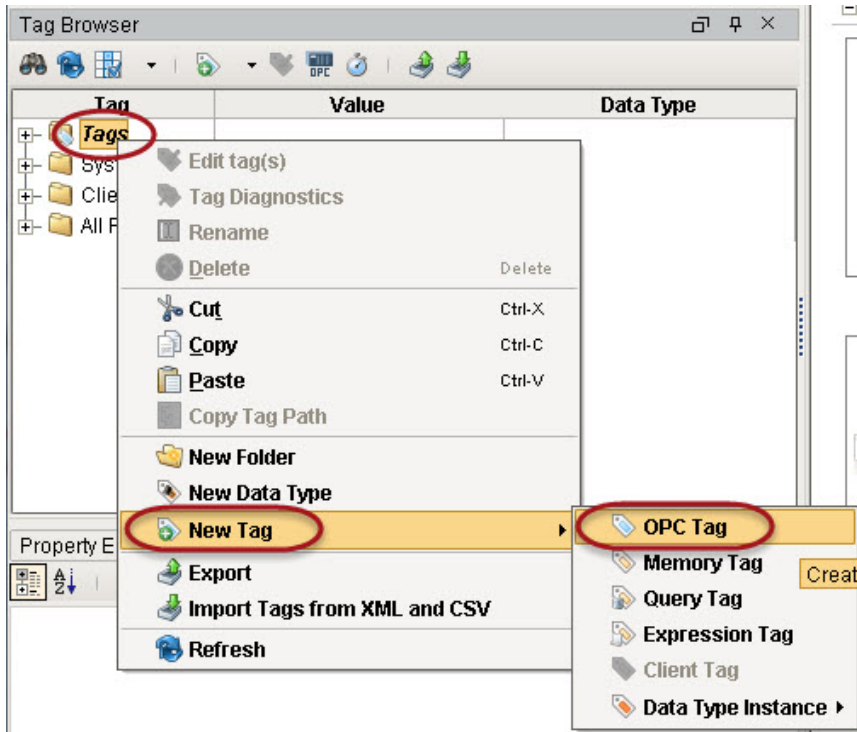
[Watch the Video](#)

That's it! You now have some Tags. You can see their values come in and start updating automatically. By default, they update at a rate of 1 per second.

To create OPC Tags Manually

You can create OPC Tags manually when you can't find them using the OPC Browser, or the device does not support browsing.

1. From **Tag Browser**, right-click on **Tags** or a folder of your choice and select **New Tag > OPC Tag**.



Creating OPC Tags Manually

[Watch the Video](#)

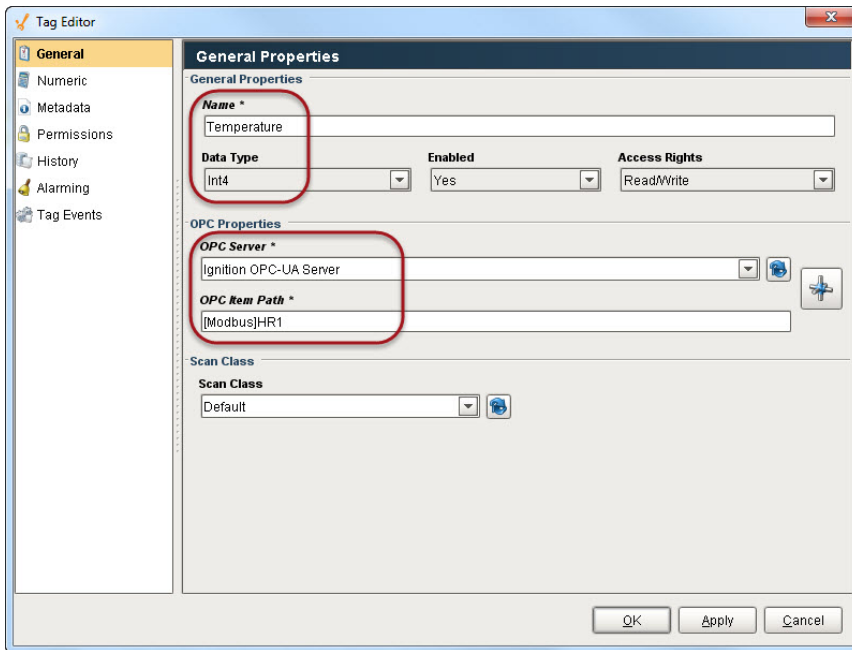
2. In the **Tag Editor** window, as an example, you can set the following values:

Name: **Temperature**

Data Type: **Int4**

OPC Server: choose **Ignition OPC-UA Server** from the dropdown

OPC Item Path: **[Modbus]HR1**, the **Modbus** device name goes in the square brackets then you give the address to PLC which in this case is the **HR** designator plus **1** as the Modbus address. The [Modbus Specific Addressing](#) section, explains how you can construct these addresses.



3. Click **OK**.
Now you can see the **Temperature** tag in the **Tag Browser**.

Addressing Bits

In order to address individual bits in Ignition, you must create a separate OPC tag pointing directly to the specific bit in the PLC.

When the integer values that come from the OPC tags are a series of binary bits, it is then possible to address each bit. For example, an integer value can have a 16-bit binary representation as shown here:

Integer	Bit level representation	How it works
4096	0,0,0,0,0,0,0,0,0,0,0,0,1,0,0,0,0	$2^{12} = 4096$
1025	1,0,0,0,0,0,0,0,0,0,0,0,1,0,0,0,0	$2^0 + 2^{10} = 1025$


To address an individual bit

Suppose a MicroLogix PLC is connected to a Gateway.

1. From the **Tag Editor** window, create an OPC tag to have:
Data Type: **Integer** with a value of 1025
OPC Item Path: **[MLX]B3:0**
2. Then create a new OPC tag with a Boolean value to the first bit of this tag as follows:
Data Type: **Boolean** with a value of 1 or True
OPC Item Path: **[MLX]B3:0/0** (for Micrologix, you can specify the bit as: 0/0 or 0.0. That is, with a slash/ or a period.) **[MLX]B3:0/0** has a value of 1 or a Boolean value of True

Related Topics ...

- [Creating Memory, Expression, and Query Tags](#)



INDUCTIVE
UNIVERSITY

Addressing Bits

[Watch the Video](#)

